

Saginaw Charter Township

STRUCTURAL STORMWATER CONTROL OPERATION AND MAINTENANCE ACTIVITIES

Township / Village

Saginaw Charter Township has used its zoning map as basic decision criteria for the prioritization for catch basins in those zones. The DPW will look at the areas every two (2) years to determine if there exists a need to change the priority of an area or zoning section of a region in the community due to an increase in litter or other refuse that may get into the street catch basins. For example; a large box store develops and there is an increase in litter from shopping bags or discarded drink containers; a residential area has significant increase in leaf litter due to trees that have reached maturity. It should be noted that this is only for catch basins owned by the township. It does not apply to MDOT roads, county roads, or private developments.

Procedure steps: Use a municipal or zoning/land use map and develop districts based on residential, business/commercial, industrial and open spaces. Overlay the storm drainage system over this map and then proceed to prioritize the areas. Look at age of drainage systems, known drainage problems, areas in floodway or floodplain, areas with gravel roads or parking spaces, and known areas of potential contaminants in proximity to the municipal system. Interview DPW staff for their opinions on problem areas, and review drainage complaints to assist in the prioritization.

This inventory will be updated annually following the construction of a catch basin or a change in the priority level. This inventory will be updated by either the Township's appointed Stormwater Program Manager and/or the Township's designee. Any updates will be included in future progress reports submitted to the Michigan Department of Environmental Quality (MDEQ).

Priority A (High):

Commercial/Business Areas, Industrial Areas, Educational Institutions and similar high pedestrian traffic areas. Other areas to consider are commercial areas that have several restaurants or night clubs/taverns; that have a lot of activity on weekends and some evenings. These areas tend to accumulate larger volumes of trash due to heavy foot traffic, material handling issues, large parking areas, or business activities. The inlet grates to the catch basins in these areas have a lot of trash in them after significant storm events. Other areas to consider are those that potentially can contribute large sediment loads in stormwater runoff and can deposit large quantities of sediment in the catch basin sumps.

The specific areas are as follows:

1. Educational districts.....
2. Local Commercial (LC), General Commercial (CG)
3. Business Transitional (BT)
4. Industrial (I)
5. Sports areas.....
6. Gravel/dirt roads, parking lots.....

Priority B (Medium):

These areas include residential, industrial and commercial areas with low foot traffic, for example, high density residential areas, commercial, medical clinics, small industries where all operations are inside and there are few employees (generally less than thirty (30) staff or employees). These areas can also be located at major intersections that generate moderate amounts of trash. Overall, the DPW staff know the

Saginaw Charter Township

STRUCTURAL STORMWATER CONTROL OPERATION AND MAINTENANCE ACTIVITIES

area generates moderate levels of trash that collects at the catch basin inlets or in the open drains and detention areas on public properties.

The specific areas are as follows:

1. Central Business (CB)
2. Residential (R-65) proximity to water
3. Light Industrial areas that are visibly clean
4. Waterfront Residential (close proximity to waters of the state)

Priority C (Low):

These areas include residential areas that are medium density or single family homes and have very low foot traffic. These areas are typically well kept up and do not generate much volume are far as trash or debris are concerned.

The specific areas are as follows:

1. Single Family (R-80), Single Family (R70) Residential
2. Open Space & Recreational...
3. Multiple Family Residential (RM-1) (Rm-2)

Table 1. Catch basin Priority Designation Summary Table

Priority	Number of catch basins (estimate)
Priority A (High)	78
Priority B (Medium)	69
Priority C (Low)	22
Total Catch Basins =	169

Saginaw Charter Township

STRUCTURAL STORMWATER CONTROL OPERATION AND MAINTENANCE ACTIVITIES

When inspecting individual catch basins during routine inspection cycles, the following prioritization method in Table 2, below, will be used to assist in assigning a maintenance/cleaning priority to a specific catch basin:

Table 2. Individual Catch Basin Priority Designation for Cleaning

Catch Basin Condition	Priority
No problems - new system	Low
Sump has no sediment	Low
Sump has sediment greater than 6” below the pipe invert	Medium
Sump has sediment less than 6” below the pipe invert	High
Sump has sediment at pipe invert	High
Sump has bad odor	High
Catch basin interior is cracked; sand is coming into the cracks; no displacement is noted at the cracks	High
There is settling around the rim; the interior has gaping cracks and displacement; sinkholes are nearby; the sump is full	High
If built out of brick; bricks are failing; bricks are missing; the rim is settling into the street or parking lot; the sump is full	High

Catch Basin Inspection / Cleaning / Maintenance:

The permittee will inspect all catch basins with a **low priority** approximately **one (1) time** over the duration of the implementation of the permit (i.e. 1x/5 years). The permittee will inspect catch basins with a **medium priority once every two (2) years**. Lastly, for the **high priority** catch basins, the permittee will inspect **each catch basin every year**. The township will perform any maintenance (cleaning, repairs, replacement, etc.) warranted depending on inspection results; schedules for performing this maintenance will be determined by the township staff when any cleaning, repairs or replacements are deemed necessary. All documentation/reports of these activities will be presented in the township’s progress reports. Please see the Drainage System Maintenance Standard Operating Procedure for additional protocols and procedures for the maintenance and cleaning of catch basin/inlet structures.

Measurable Goals:

- # of changes in priority per year.
- # of revisions or updates annually after new construction or reconstruction.
- # of individual Catch Basins prioritized after inspection annually.

Saginaw Charter Township STRUCTURAL STORMWATER CONTROL OPERATION AND MAINTENANCE ACTIVITIES

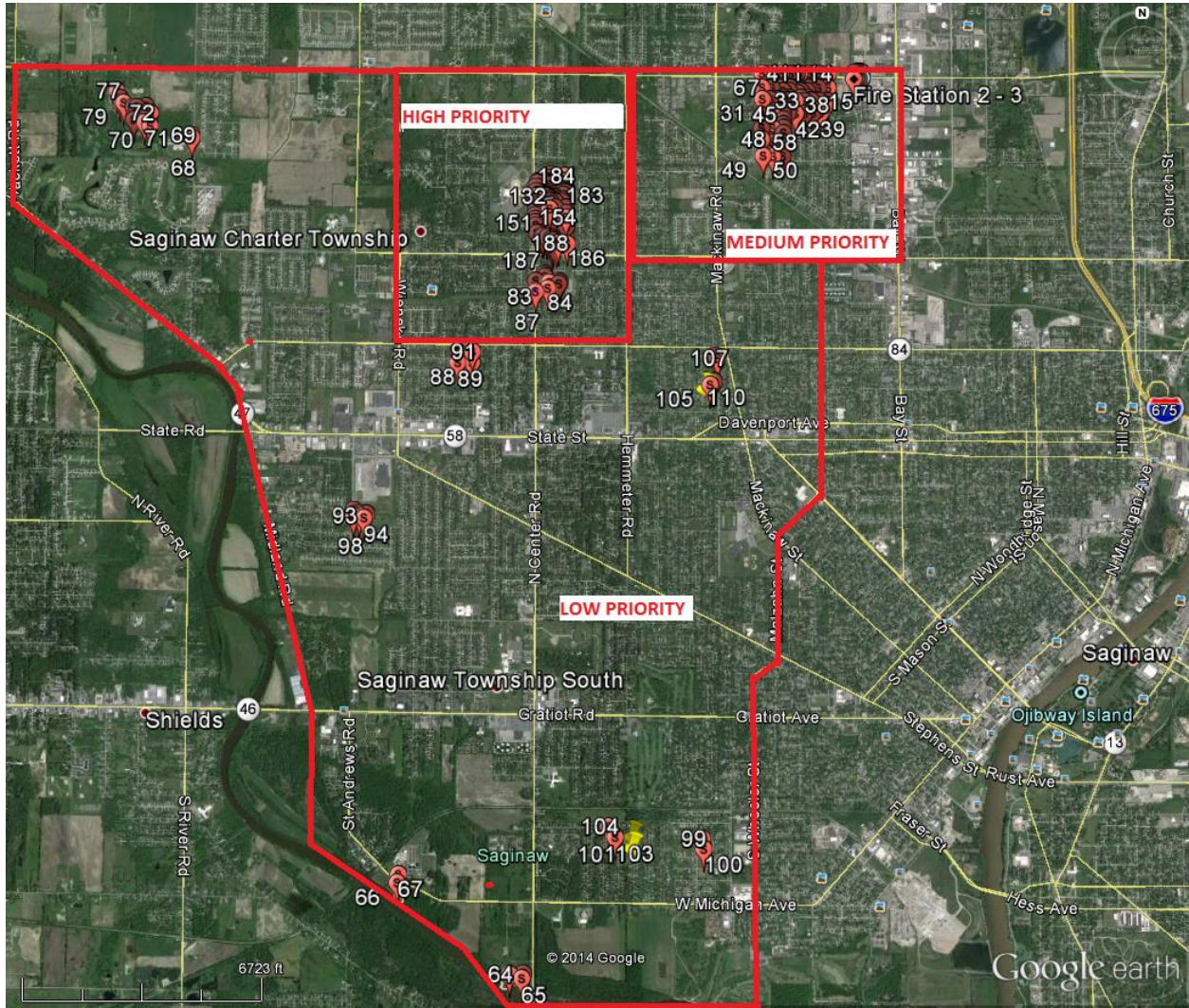


Figure 1. Saginaw Charter Township's Catch Basin Priorities